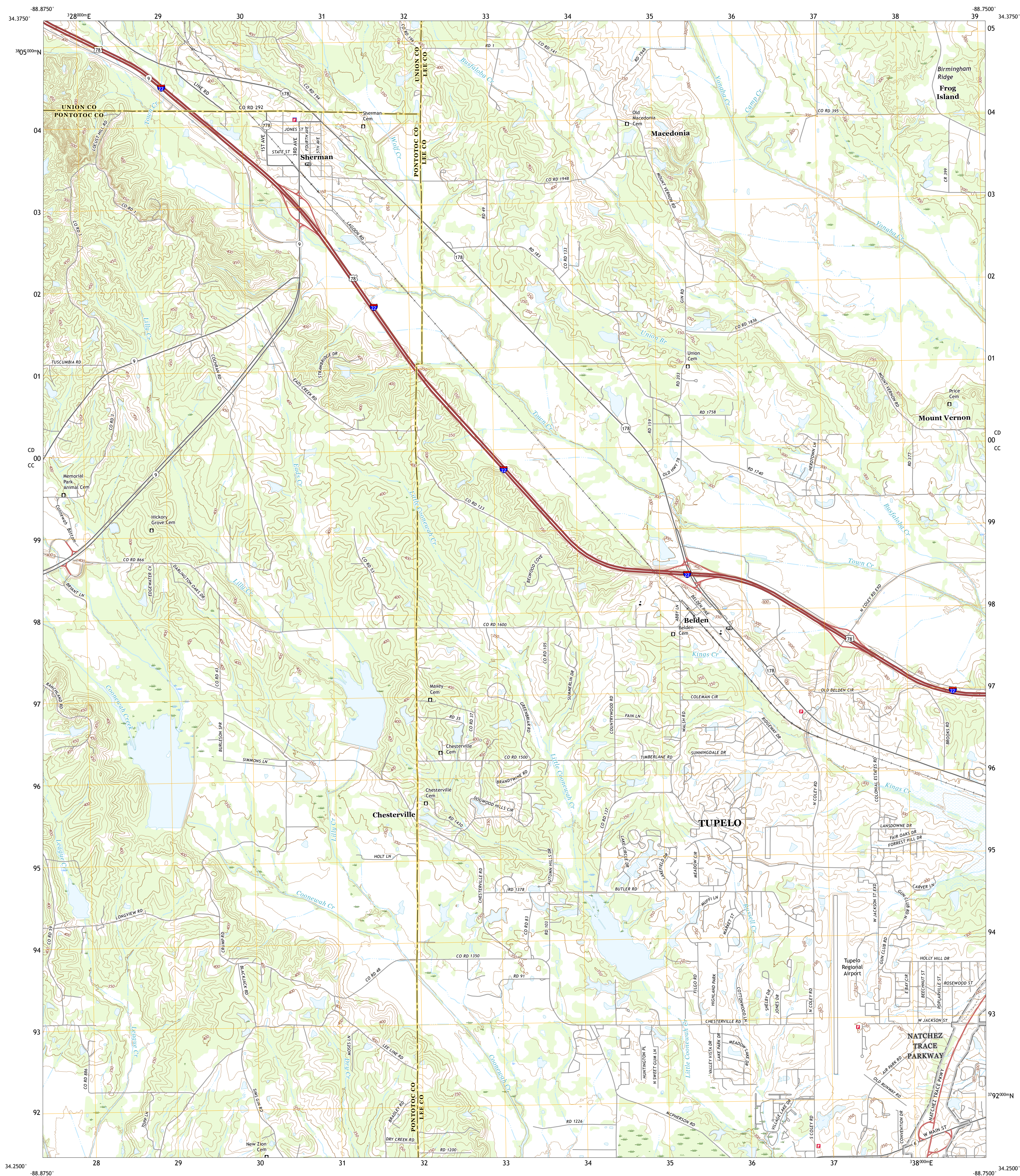




U.S. DEPARTMENT OF THE INTERIOR
U.S. GEOLOGICAL SURVEY



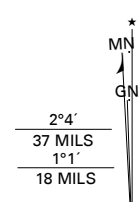
**SHERMAN QUADRANGLE
MISSISSIPPI
7.5-MINUTE SERIES**



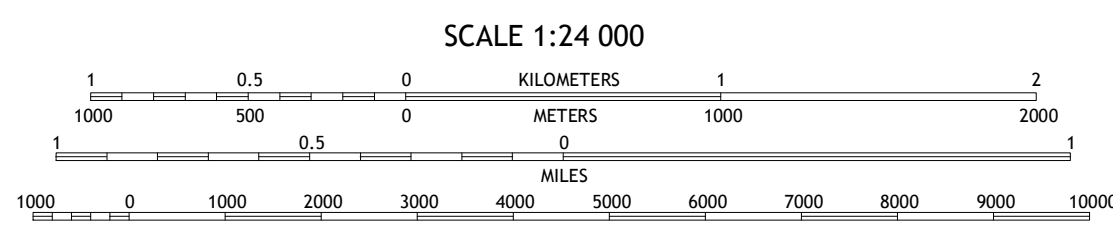
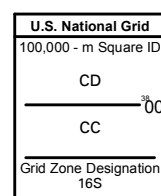
Produced by the United States Geological Survey

North American Datum of 1983 (NAD83)
World Geodetic System of 1984 (WGS84). Projection and
1 000-meter grid: Universal Transverse Mercator, Zone 16S
This map is not a legal document. Boundaries may be
generalized for this map scale. Private lands within govern-
ment reservations may not be shown. Obtain permission before
entering private lands.

Imagery.....	NAP, June 2016	July 2016
Roads.....	U.S. Census Bureau,	2017
Names.....	GNIS, 1980	-
Hydrography.....	National Hydrography Dataset, 2004	2017
Contours.....	National Elevation Dataset,	2013
Boundaries.....	Multiple sources; see metadata file	2014 - 2016
Public Land Survey System.....	BLM,	2017
Wetlands.....	FWS National Wetlands Inventory	1980 - 1981



UTM GRID AND 2017 MAGNETIC NORTH
DECLINATION AT CENTER OF SHEET



CONTOUR INTERVAL 10 FEET
NORTH AMERICAN VERTICAL DATUM OF 1988

This map was produced to conform with the
National Geospatial Program US Topo Product Standard, 2011.
A metadata file associated with this product is draft version 0.6.18






QUADRANGLE LOCATION

1	2	3
4		5
6	7	8

ADJOINING QUADRANGLES

- 1 New Albany East
- 2 Ellistown
- 3 Guntown
- 4 Northeast Pontotoc
- 5 Tupelo
- 6 Southeast Pontotoc
- 7 Bissell
- 8 Verona

ROAD CLASSIFICATION

Expressway Local Connector
 Secondary Hwy Local Road
 Ramp 4WD
 Interstate Route  US Route  State Route

SHERMAN, MS

2018



NSN. 7 6 4 3 0 1 6 3 7 5 4 2 1
NGA REF NO. USGSX24K41033